

# CARDEV®

Product Datasheet

## 4S-E


### Mobile Offline Filtration System

- Intelligent PLC control with LCD display
- Auto-adjust – automatic pressure regulation
- Pre-heater for cold / viscous oils
- Filter element change timer
- Large capacity pre-filter with re-usable filter bag
- Integrated sample points – allows connection to ETL ConMon particle monitors / oil sampling



FOR SYSTEMS UP TO  
  
1000  
LTRS

TYPICAL FLOW RATE  
  
220  
LPH

VOLTAGE OPTIONS  
  
110V 230V

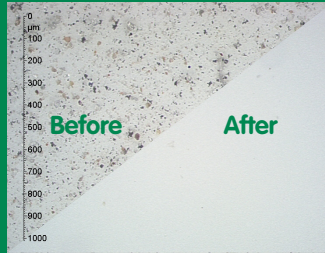
## Results

### Water Removed

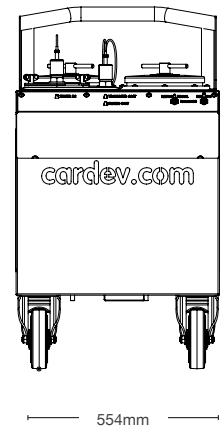
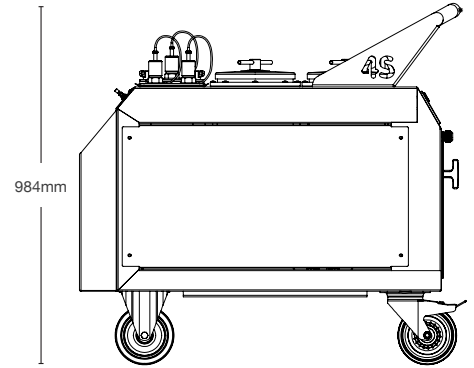
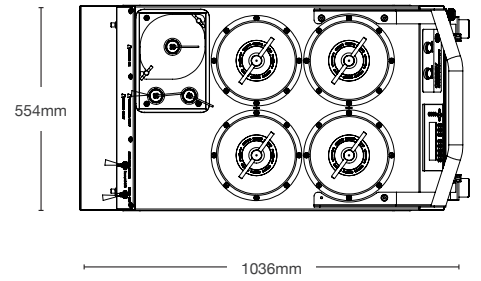


Removes free and dissolved water down to < 50 ppm (0.005%)

### Particles Removed



Oil cleanliness maintained at better than new levels (Down to 13/11/8 (ISO 4406: 1999) - Class 2 (NAS 1638).



### Benefits

- Removes varnish and microparticles (down to less than 1 micron)
- Removes free and dissolved water contamination
- Increases system reliability
- Prevents system corrosion
- Reduces component wear
- Extends oil life and generates CO<sub>2</sub> savings
- Reduces operating costs

### Application Examples

Suitable for all types of Industrial applications, e.g:

- Power generation
- Plastic moulding
- Cement Industry
- Manufacturing plants
- Service workshops

Max Operating Temp	IP Rating	Flow rate (l/h)	Pump Suction Lift	Voltage	Current Draw	Dimensions (mm)		Weight (kg)	Filter Element Type	Retention Capacity (per set)	
						H	W			Dirt (kg)	Litres of water
60°C	IP55	500	Self-priming to 5.5 metres	230V	≤12.5 Amps	984	554	120	Standard fit: 4 x SDFC (oil based fluids)	≤ 10 kg	≤ 3.12 Litres of water
						L		1036			

Note: Flow rates, oil cleanliness levels and moisture removal results are based on ISO VG 46 Mineral Oil @ 40°C

**ETL FluidExperts**

ETL Fluid Experts Ltd  
 Environmental Technologies Group Grimbald Crag Road Knaresborough North Yorkshire HG5 8PY United Kingdom  
 T +44 (0)1423 522911 F +44 (0)1423 530043 E sales@etlfe.com

[www.etlfluidexperts.com](http://www.etlfluidexperts.com)

The specification and photography is for reference only and may be subject to change. ETL Fluid Experts Ltd is part of the Environmental Technologies Group Ltd. All rights reserved.