



# SDU-H350BM2-FL

## By-pass Oil Filter

- Low profile surface mounted installation
- Removes microparticles
- Removes free and dissolved water contamination
- Increases system reliability
- Prevents system corrosion
- Reduces component wear
- Extends oil life and generates CO<sub>2</sub> savings
- Reduces operating costs



## Results

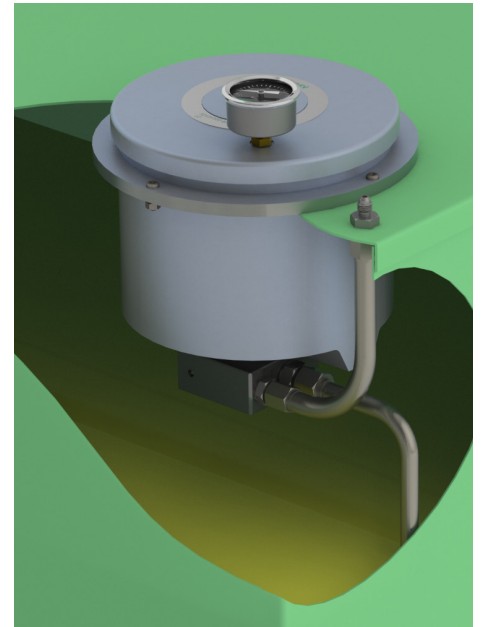
- Up to 99.9% water removed (both free and dissolved water)
- Oil cleanliness maintained at "better than new\*" levels

## Features

- Input pressure 5-350 Bar
- Flow through filter controlled at 2 litres per minute
- Designed to be surface mounted in a hydraulic tank for a simple, compact installation



Before After  
\*(ISO 4406: 13/11/08, NAS Class: 2)



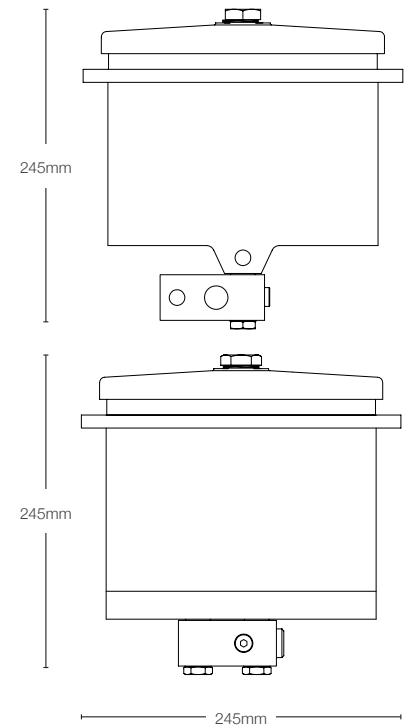
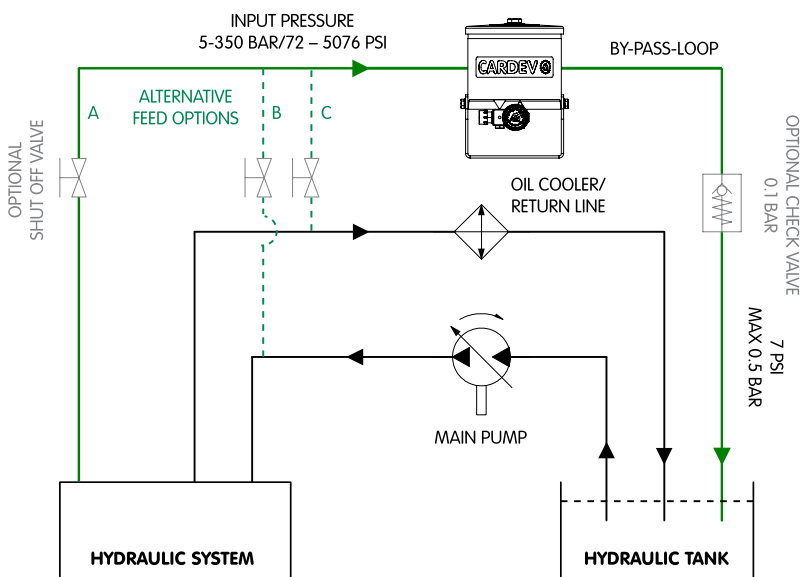
Installation image shows optional pressure gauge fitted

## Application Examples

OEM tank installation

- Earth moving machines
- Mobile cranes
- Forestry equipment
- Drilling / piling equipment
- Static hydraulic systems

## Installation Example



Type	Recommended Installation	Flow rate through filter (l/h) **	Dimensions (mm)			Connections		Weight (kg)	Filter Element	Retention Capacity (per filter)	
			H	W	L	Inlet	Outlet			Dirt (kg)	Water (l)
SDU-H350BM2-FL	By-pass only. Max. 350 Bar inlet and 0.5 Bar back pressure. Systems up to 400 litres	120	245	245	245	1/4" BSP (m)	3/8" BSP (m)	9.4	SDFC	≤ 2.5	≤ 0.78

\*\*flow rates based on ISO 46 oil @ 40°C

## Environmental Technologies Limited

Grimbald Crag Road Knaresborough HG5 8PY United Kingdom  
T +44 (0)1423 522911 F +44 (0)1423 530043 E sales@env-t.com  
www.env-t.com

The specification and photography above is for reference only and may be subject to change.  
ETL, ETL Flow, ETL ConMon are trademarks of ETL Ltd. © 2015 Environmental Technologies Ltd. All rights reserved.

VO5-26-3-15-ENG

