

Series P90 Liquid Filtration Products



PERRY EQUIPMENT CORPORATION

P E T R O C H E M I C A L

P H O T O G R A P H I C

E L E C T R O N I C S

C H E M I C A L

B E V E R A G E

C O S M E T I C S

I N D U S T R I A L

P U L P & P A P E R

P O W E R G E N E R A T I O N



PEACH[®] 90-P90

Patented Liquid Filtration Elements

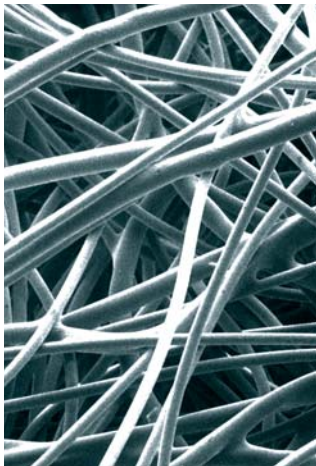
P E C O E N G I N E E R E D A P P L I E D C O N I C A L H E L I X

Patent No. 5827430 & 5893956 (International Pat. Pending)



PEACH® 90 FILTRATION TECHNOLOGY

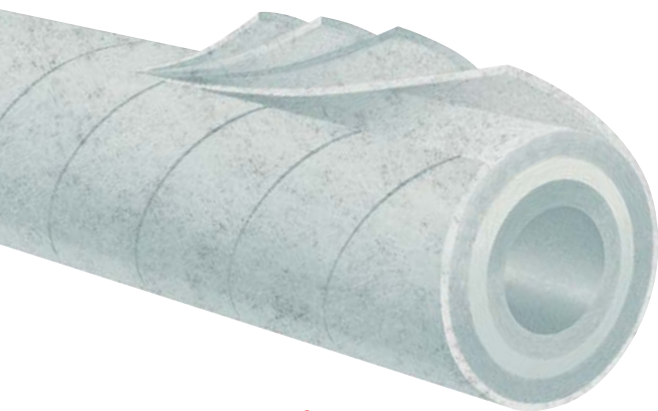
provides consistent, predictable performance
and high contaminant loading.



PECO Engineered Media 150X
SEM Photo by Southwest Research Institute

PEM MEDIA

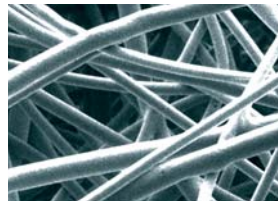
PECO Engineered Media, specifically designed for filtration, is the key component in the production of the PEACH® 90 liquid element. Fibers of various denier are weighed, blended and thermally bonded, then formed into a compressed filter media sheet. Various layers of PEM media are then used in the manufacture of the PEACH® 90 element.



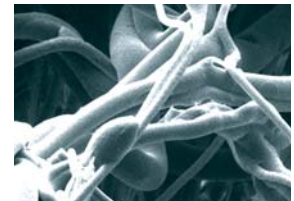
The PEACH®
Conical Helix Structure
yields high flow and
maximum efficiency.

PEACH® 90

PEACH® 90 consists of several lateral sections of PEM media formed into a conical helix pattern. Each section consists of multiple helical wrapped layers. Through thermal bonding, layers are applied to conform and overlap the previous layer, forming a cone...the conical helix structure. This structure results in a graded density pattern that yields high contaminant loading, structural strength, maximum efficiency, and excellent reproducibility.



Peach Media 150X
SEM Photo by Southwest Research Institute



Melt Blown Media 150X
SEM Photo by Southwest Research Institute

ISO 9001 CERTIFICATION

PECO Filtration Elements are manufactured under a quality management system certified to ISO 9001. This assures that each PECO Filter is engineered and manufactured to the highest level of quality...assuring you consistent tolerances and quality...filter after filter!

PEACH® 90 ENVIRONMENTALLY FRIENDLY

- 100% synthetic
- Incinerable
- Ease of disposal: crush, shred, chop, etc.
- Coreless, no metal parts
- No unloading
- No media migration
- FDA compatible polypropylene media

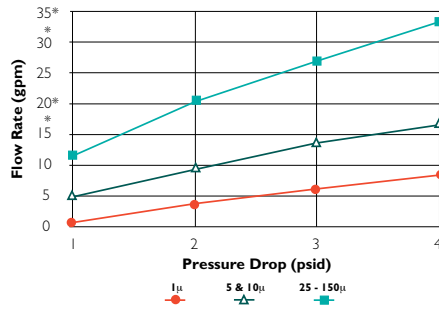
MARKETS AND APPLICATIONS

Chemical/Petrochemical Industries • Amine • Product Polishing • Glycol • Acids & Alkali • Solvents • Herbicides & Pesticides • Catalyst Disposal Well Fluids • Injection & Lubricants **General Industrial** • Inks • Adhesives • Fabric Coatings • Liquid Detergents • Paints • Dyes Audio/Video Coatings • Photographic Chemicals • Can Coatings • Plating Solutions **Electronics** • Pre-RO • Bulk Chemical Filtration **Beverage** • Bottled Water • Beer Filtration (resin trap) • Juice Drinks • Bottling Plants (soft drinks) **Photographic** • Film Processing Developers • Fixers **Cosmetics** • Mouthwash • Soaps • Mineral Oils • Lotions **Power Generation** • Boiler Feed Water • Make-Up Water Transformer Oils **Pulp & Paper** • Squirter Lines • Waster Water

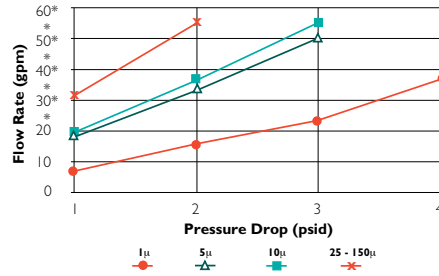
FLOW RATE VS PRESSURE DROP

POLYESTER ELEMENTS

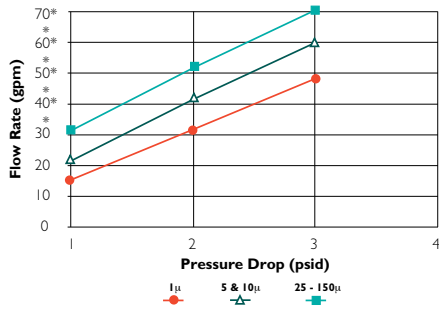
Flow/10"-----



Flow/336"-----

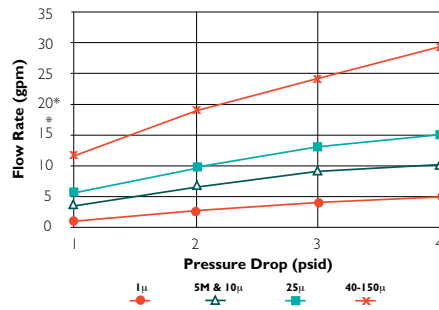


Flow/347"-----

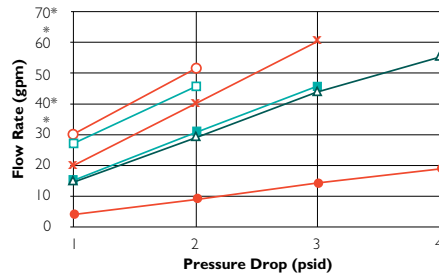


POLYPROPYLENE ELEMENTS

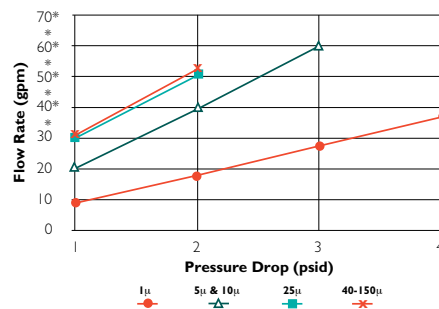
Flow/10"-----



Flow/336"-----



Flow/347"-----



END CAP OPTIONS

CUSTOM ENGINEERED

The P90 series filters can be custom engineered for high usage applications.

OPERATING DATA

Flow Direction:
Outside to Inside as standard.

Recommended Differential Changeout:
25-30 psid

pH Range
Polypropylene-(0-14)
Polyester-(0-9)

Collapse Pressure:
50 psid* @ 75° F, 24° C
* applicable to 2.5" O.D. only

Operating Temperatures:
Polypropylene-180° F, 82° C
Polyester-240° F, 116° C

PRODUCT SPECIFICATION:

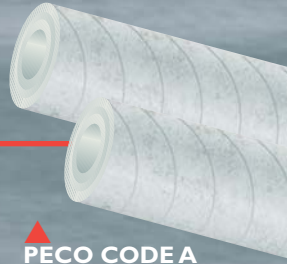
Media:
Polypropylene, Polyester.

Core:
None

End Cap Styles:
See illustrations at right.

Gaskets:
None required on DOE style. Buna-n, Viton, EPR and Silicone on other end cap options.

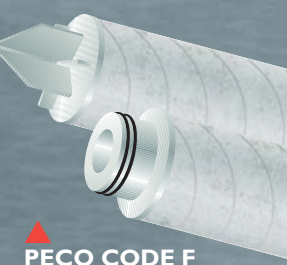
End Cap Accessories:
Springs—Carbon Steel or Stainless.
Core Extender - Polypropylene
Stainless Steel



PECO CODE A
DOE



PECO CODE O
222/CLOSED



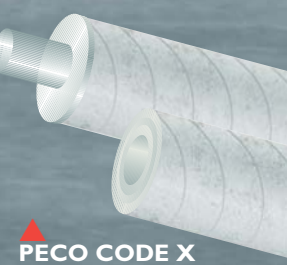
PECO CODE F
FINNED/222



PECO CODE J
ORING/226



PECO CODE S
SPRING

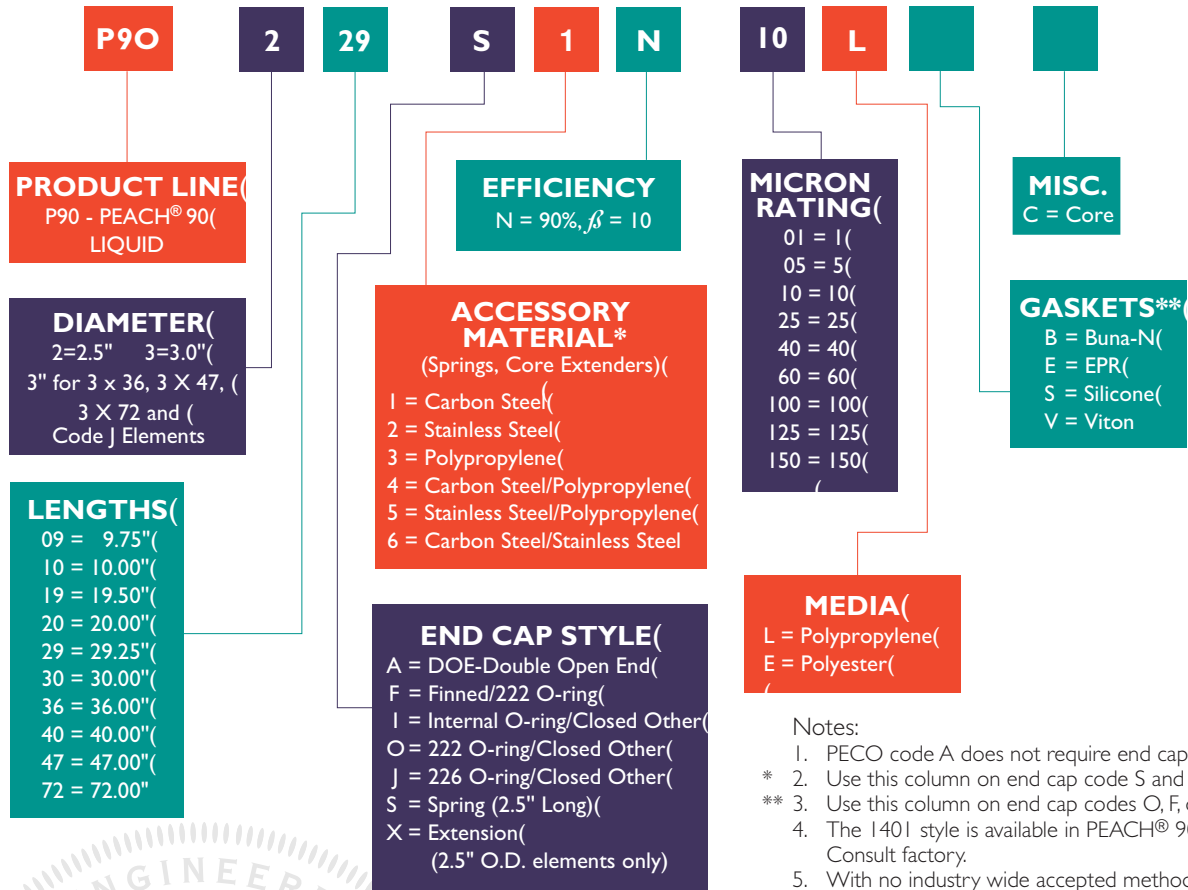


PECO CODE X
DOE with
Core Extender



PECO CODE I
Single Open End
1401 Style

PEACH® 90 - P90 ELEMENT NOMENCLATURE



- Notes:
1. PECO code A does not require end caps or gaskets.
 - * 2. Use this column on end cap code S and X.
 - ** 3. Use this column on end cap codes O, F, or J.
 4. The 1401 style is available in PEACH® 90. Consult factory.
 5. With no industry wide accepted method of rating filters, PECO uses a recirculating system to test efficiencies. A modified version of ASTM-795, F-796 and F-797 is used. Test is concluded at 20 psid.

Not all combinations available.
Consult Factory for verification.

PEACH
90%
FILTRATION

PECO

email:
fs@pecousa.com
web site:
www.pecousa.com