

Series PPL Liquid Filtration Products



PERRY EQUIPMENT CORPORATION

PETRO-PEACH[®]

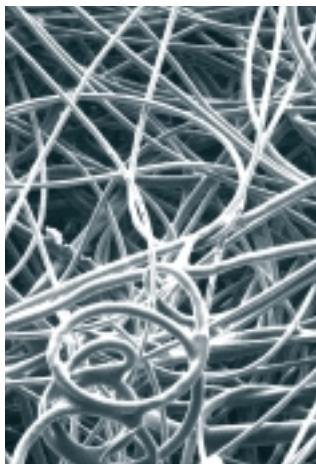


PECO ENGINEERED APPLIED CONICAL HELIX

Patent No. 5827430 & 5893956 (International Pat. Pending)

PETRO-PEACH® FILTRATION TECHNOLOGY

provides consistent, predictable performance and high contaminant loading.



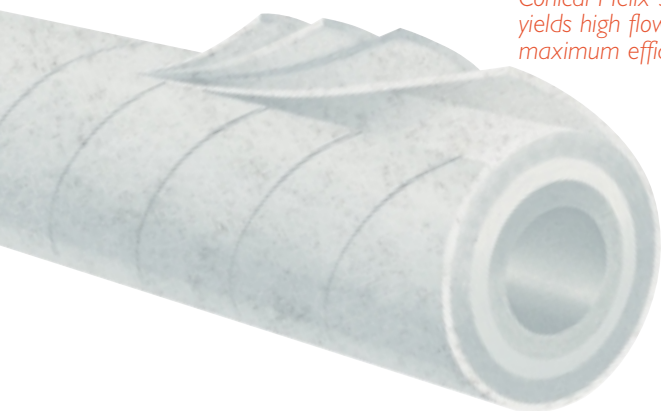
PECO Engineered Media 75X
SEM Photo by Southwest Research Institute

PEM MEDIA

A Computer-Controlled Process

PECO Engineered Media, specifically designed for filtration, is the key component in the production of the PETRO-PEACH® liquid element. Unlike most flat sheet synthetic media manufactured to a bubble point, PEM media is engineered to a specific micron rating and efficiency. Fibers of various denier are weighed, blended and thermally bonded, then formed into a compressed filter media sheet. Various layers of PEM media are then used in the manufacture of the PETRO-PEACH® element.

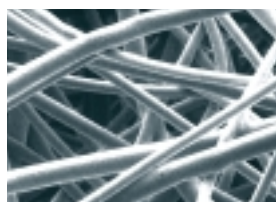
The PEACH® Conical Helix Structure yields high flow and maximum efficiency.



PETRO-PEACH®

A Computer-Controlled Process

PETRO-PEACH® consists of several lateral sections of PEM media formed into a conical helix pattern. Each section consists of multiple helical wrapped layers. Through thermal bonding, layers are applied to conform and overlap the previous layer, forming a cone...the conical helix structure. This structure results in a graded density pattern that yields high contaminate loading, structural strength, maximum efficiency, and excellent reproducibility.



Peach Media 150X
SEM Photo by Southwest Research Institute



Melt Blown Media 150X
SEM Photo by Southwest Research Institute

PECO LABORATORY TESTING

PECO uses a recirculating system to test efficiencies of filters. A modified version of ASTM-795, F-796 and F-797 is used. The test is concluded at 20 psid. Total contaminate loading is determined at the conclusion of the test.

BETA RATING DEFINED

$$\beta = \frac{\text{Influent particle count greater than size } \times}{\text{Effluent particle count greater than size } \times} \quad \% \text{ Removal Efficiency} = \frac{\beta - 1}{\beta} \times 100$$

ISO 9001 CERTIFICATION

PECO Filtration Elements are manufactured under a quality management system certified to ISO 9001. This assures that each PECO Filter is engineered and manufactured to the highest level of quality standards in the industry...therefore assuring you consistent tolerances and quality...filter after filter!

Consult factory for applications requiring FDA listed materials.

PETRO-PEACH® ENVIRONMENTALLY FRIENDLY

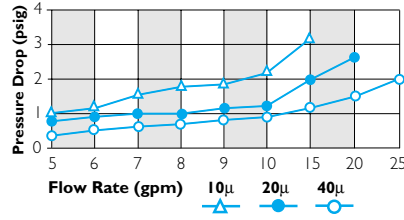
- 100% synthetic
- Incinerable
- Ease of disposal: crush, shred, chop, etc.
- Coreless, no metal parts
- No unloading
- No media migration

MARKETS AND APPLICATIONS

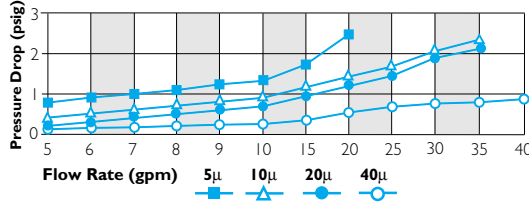
- Amine
- Product Polishing
- Glycol
- Acids & Alkali
- Solvents
- Herbicides & Pesticides
- Catalyst
- Disposal Well Fluids
- Injection & Lubricants
- Tail Gas Treating
- Power Cogeneration
- Boiler Feed Water
- Make-up Water
- Transformer Oils
- Hydrotreating
- Alkylation
- Hydrocracking
- Crude Desalting
- Sulfur Recovery
- Catalytic Reforming
- Isomerization
- Waterflood

FLOW VS PRESSURE DROP

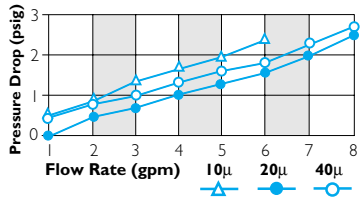
3 x 36" Polypropylene
(for 347" take dp at 336 x .5)



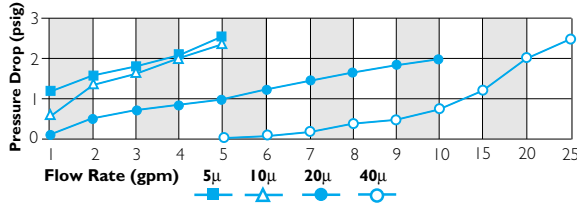
3 x 36" Polyester
(for 347" take dp at 336 x .5)



Flow/10" Element - Polypropylene



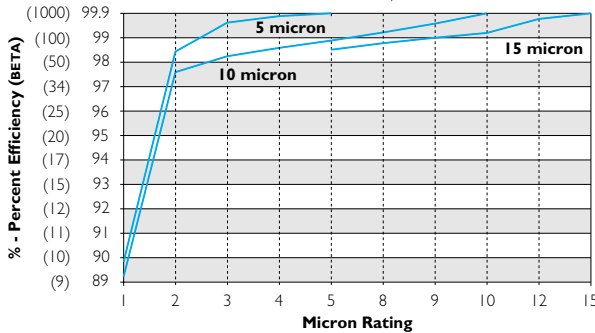
Flow/10" Element - Polyester



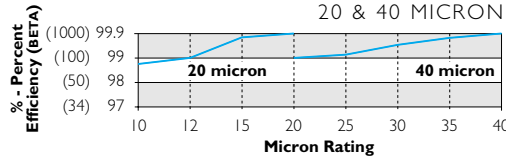
For 15µ, use 20µ curve on all charts above.

EFFICIENCY CURVES

5, 10 & 15 MICRON



20 & 40 MICRON



DIRT LOADING CHARACTERISTICS

Length	Micron Rating (lbs./grams)					
	2	5	10	15	20	40
10"	.07/31	.13/60	.14/65	.15/69	.17/78	.19/87
20"	.15/64	.26/118	.29/128	.31/141	.35/159	.40/182
30"	.20/95	.41/186	.42/195	.46/208	.47/214	.48/220
40"	.27/123	.50/228	.55/250	.61/278	.68/310	.75/342
336"	.29/132	.54/246	.59/270	.65/299	.73/334	.81/369



END CAP OPTIONS



PECO CODE A
DOE

CUSTOM ENGINEERED

The PPL series filters can be custom engineered for specific applications.

OPERATING DATA

Flow Direction:

Outside to Inside as standard.

Consult factory for reverse flow.

Recommended Differential Changeout:

25-30 psid

pH Range

Polypropylene-(0-14)

Polyester-(0-9)

Collapse Pressure:

50 psid* @ 75° F, 24° C

* applicable to 2.5" O.D. only

Operating Temperatures:

Polypropylene-180F

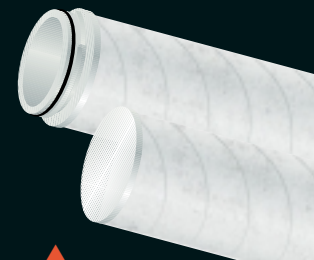
Polyester-240F



PECO CODE O
222/CLOSED



PECO CODE F
FINNED/222



PECO CODE J
ORING/226

PRODUCT SPECIFICATION:

Media:

Polypropylene, Polyester.

Core:

None

End Cap Styles:

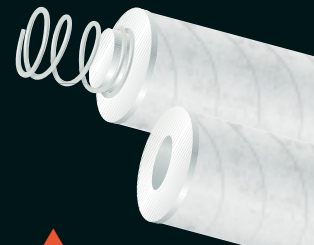
See illustrations at right.

Gaskets:

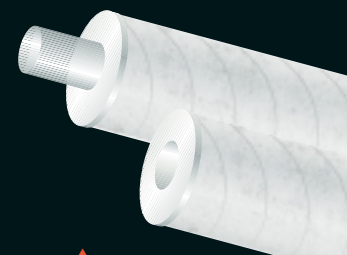
None required on DOE style. Buna-n, Viton, EPR and Silicone on other end cap options.

End Cap Accessories:

Springs—Carbon Steel or Stainless.

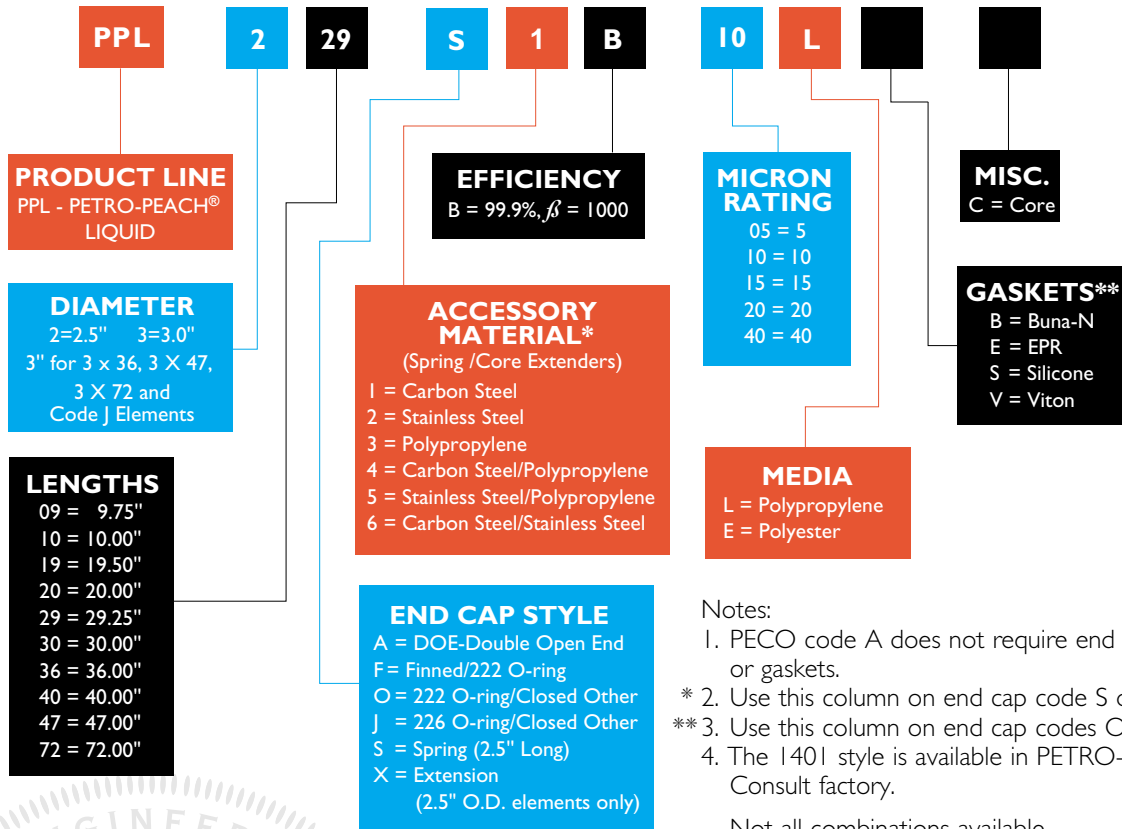


PECO CODE S
SPRING



PECO CODE X
DOE with
Core Extender

PETRO-PEACH® PPL ELEMENT NOMENCLATURE



Notes:

1. PECO code A does not require end caps or gaskets.
- * 2. Use this column on end cap code S or X.
- ** 3. Use this column on end cap codes O, F, or J.
4. The 1401 style is available in PETRO-PEACH®. Consult factory.

Not all combinations available.
Consult Factory for verification.

Your local distributor:

Corporate Offices & Plant

PERRY EQUIPMENT CORPORATION
Wolters Industrial Park
P.O. Box 640
Mineral Wells, Texas 76068
Telephone: 940-325-2575
800-877-PECO
Telefax: 940-325-4622
e-mail: mwsales@perryequipment.com

Houston Branch Office

1758 West Sam Houston Parkway N.
Houston, Texas 77043-3115
Telephone: 713-973-2575
Telefax: 713-467-0475
e-mail: houstonsales@perryequipment.com

Perry Equipment Italiana S.R.L.

via Camozzi, 106
24121 Bergamo (BG)
Italy
Telephone: 3903-523-6340
Telefax: 3903-523-6380
e-mail: italysales@perryequipment.com

Perry Equipment De México

Parque Industrial Benito Juárez
Acceso III, 4-A
Querétaro, Querétaro, México C.P.
76120
Telephone: 52-42-10-34-89
Telefax: 52-42-10-90-39
Parque Industrial Querétaro
Calle Cerrada La Noria #108
Santa Rosa Jaurequi
Querétaro, Querétaro, México C.P.
76220
e-mail: mexicosales@perryequipment.com

Perry Equipment Corporation

S.E. ASIA REGIONAL OFFICE
35-4 Jalan SP2/I
Taman Serdang Perdana, Seksyen2,
43300 Seri Kembangan
Selangor D.E., Malaysia
Telephone: 603-8941-2366

Telefax: 603-8941-1366
e-mail: asiasales@perryequipment.com
Peco Filters, Ltd.
1351 Hastings Crescent S.E.
Calgary, Alberta
Canada T2G-4C8
Telephone: 403-243-6700
Telefax: 403-287-9304
e-mail: canadasales@perryequipment.com

European Offices

PERRY EQUIPMENT LTD.
Brunel Business Court
Brunel Way, Thetford
Norfolk IP24 1HP
England
Telephone: 01842 821000
Telefax: 01842 821050
e-mail: uksales@perryequipment.com
www.perry-equipment.co.uk