

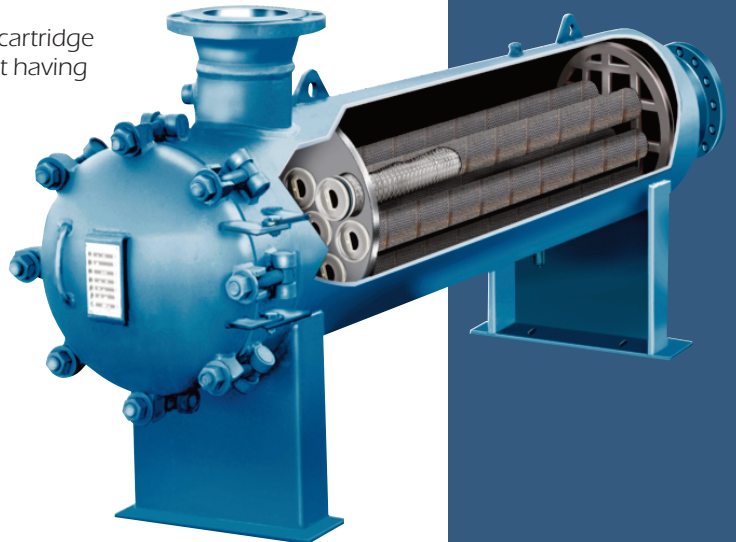
XtreamPure®

HIGH FLOW CAPACITY LIQUID FILTRATION



FEATURES & ADVANTAGES

- Significantly fewer cartridges to change out than traditional 63.5 mm OD & 76 mm OD cartridges. Generally reduces housing case diameter by 1 or 2 sizes smaller.
- Inside-to-outside cartridge flow path forces contaminants to be captured inside and within the cartridge allowing a cleaner cartridge extraction during change-outs.
- High strength outer support attached to OD of cartridge ensures media will not balloon or become embedded in basket support. Also ensures easy removal of cartridge upon extraction during change-out.
- Outer basket support around the cartridge provides pressure ratings up to 3.4 bar.
- Inside-out flow basket support configuration allows for a wide range of cartridge media types.
- Patent Pending PECOSeal™ technology on cartridge provides absolute sealing of cartridge to basket support and also to cartridge support plate of competitor housings, even when they are out-of-round.
- Cartridge seals against the basket support rather than the cartridge support plate. This results in the cartridge support plate not having to be as thick as competitor's designs.
- Proprietary basket design allows for easy low cost repair of baskets in the event replacement is necessary.

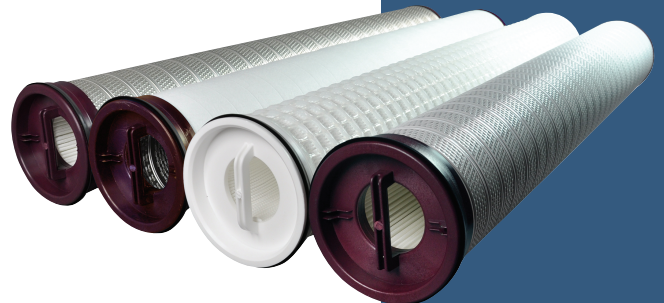


Housings

- Sizes from 254 mm diameter up to 2134 mm diameter.
- Carbon steel, stainless steel
- Stainless steel basket internals
- Vertical or horizontal configurations
- Standard sizes in stock and custom sizing available

Cartridges

- Available in 1016 mm and 1524 mm lengths
- Wide range of material options available in both pleated and depth style configurations.
- Micron Ratings from 1 to 100
- Flow Direction Inside to Outside
- Cartridges can be retrofit in competitors high flow style housings



- Recommended Change-out Differential Pressure 2.4 bar
- Maximum Allowable Differential Pressure 3.4 bar
 - Assuming use of full encirclement basket support sleeve in housing
 - As in any case, do not exceed the housings maximum Differential Pressure rating of cartridge support plate

55HX Horizontal XtreamPure®

Housings Model ¹	No. of Cartridges	Optimal Flow Rate @1cP (lpm) ²	Housing Diameter (mm)	Flange Inlet/Outlet Diameter (mm)	Housing Length (mm) ³	Housing Height (mm) ³	Average Contaminant Capacity at Optimal Flow (kg)
55HX-1-660-10-xxxx	1	1,136	254 OD	114	2464	762	13
55HX-3-660-18-xxxx	3	3,407	457 OD	168	2642	965	38
55HX-4-660-20-xxxx	4	4,542	508 OD	219	2794	1067	51
55HX-7-660-24-xxxx	7	7,949	610 OD	273	2921	1168	89
55HX-12-660-30-xxxx	12	13,627	762 ID	324	3099	1321	152
55HX-19-660-38-xxxx	19	21,577	965 ID	406	3327	1524	241
55HX-20-660-42-xxxx	20	22,712	1067 ID	406	3683	1626	254
55HX-31-660-48-xxxx	31	35,204	1219 ID	508	3962	1829	394
55HX-37-660-54-xxxx	37	42,018	1372 ID	610	4191	1981	470
55HX-43-660-60-xxxx	43	48,832	1524 ID	610	4318	2134	546
55HX-58-660-66-xxxx	58	65,866	1676 ID	660	4470	2286	737
55HX-69-660-72-xxxx	69	78,358	1829 ID	762	4648	2438	876
55HX-85-660-78-xxxx	85	96,528	1981 ID	813	4801	2591	1,080

- Standard ratings up to 102 bar / 37° C
- Standard housing material carbon steel w/ stainless steel basket internals
- Other housing materials such as 304SS & 316L available upon request
- All housings are ASME code

55VX Vertical XtreamPure®

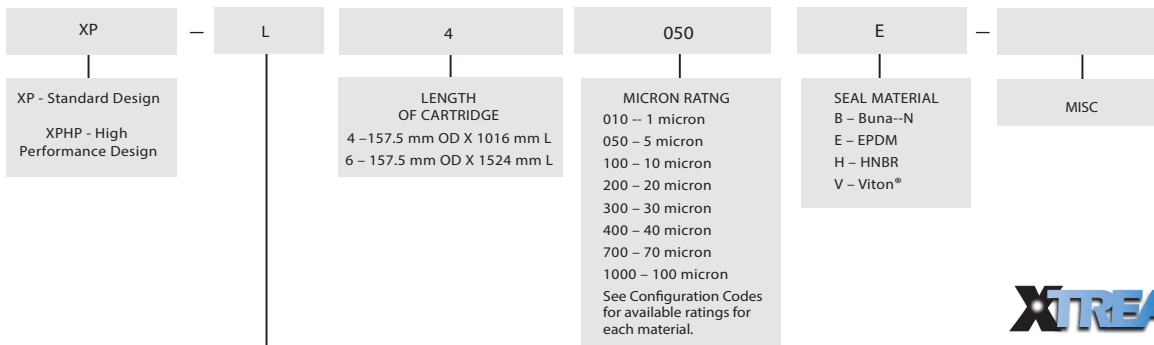
Housing Model ¹	No. of Cartridges	Optimal Flow Rate @1cP (lpm) ²	Housing Diameter (mm)	Flange Inlet/Outlet Diameter (mm)	Housing Length (mm) ³	Housing Height (mm) ³	Average Contaminant Capacity at Optimal Flow (kg)
55VX-1-640-10-xxxx	1	757	254 OD	89	457	2,134	9
55VX-3-640-18-xxxx	3	2,271	457 OD	168	660	2,413	26
55VX-4-640-20-xxxx	4	3,028	508 OD	168	711	2,438	34
55VX-7-640-24-xxxx	7	5,300	610 OD	219	864	2,642	60
55VX-12-640-30-xxxx	12	9,085	762 ID	273	1,016	2,896	103
55VX-19-640-38-xxxx	19	14,385	965 ID	324	1,219	3,150	164
55VX-20-640-42-xxxx	20	15,142	1067 ID	406	1,321	3,785	172
55VX-31-640-48-xxxx	31	23,470	1219 ID	406	1,473	3,861	267
55VX-37-640-54-xxxx	37	28,012	1372 ID	457	1,676	4,191	319
55VX-43-640-60-xxxx	43	32,555	1524 ID	508	1,829	4,318	371
55VX-58-640-66-xxxx	58	43,911	1676 ID	610	1,981	4,801	500
55VX-69-640-72-xxxx	69	52,239	1829 ID	610	2,134	4,877	595
55VX-85-640-78-xxxx	85	64,352	1981 ID	660	2,286	5,105	733

¹ xxxx = pressure rating

² Optimal flow rate for highest contaminant loading capacity. Maximum flow rate allowable per 1,016 mm cartridge 1,325 lpm. Maximum flow rate allowable per 1,524 mm cartridge 18,931 lpm.

³ Housing length & height dimensions are based on 102 bar design pressure. The dimensions will be smaller as design pressure goes down.

CARTRIDGE ORDERING INFORMATION



STANDARD CONFIGURATION CODES

- L - Pleated Polypropylene, Polypropylene Cage and End Caps, EPDM Seal, Temp Limit: 82° C
Micron Ratings: 5, 10, 20, 40, 70, 100
- E - Pleated Polyester, Nylon End Caps, Tin Plated Louvered Canbody, Buna-N Seal, Temp Limit: 116° C
Micron Ratings: 5, 10, 20, 40, 70, 100
- G1 - Pleated Fiberglass/Acrylic Backing, Nylon End Caps, Tin Plated Louvered Canbody, Viton Seal, Temp Limit: 121° C
Micron Ratings: 1, 5, 10, 20, 30
- G2 - Pleated Fiberglass/Acrylic Backing, Nylon End Caps, Corrosion Resistant Canbody, Viton Seal, Temp Limit: 121° C
Micron Ratings: 1, 5, 10, 20, 30
- GHT1 - Pleated Fiberglass/Epoxy Backing, Nylon End Caps, Tin Plated Louvered Canbody, Viton Seal, Temp Limit: 177° C
Micron Ratings: 1, 5, 10, 20, 30
- GHT2 - Pleated Fiberglass/Epoxy Backing, Nylon End Caps, Corrosion Resistant Canbody, Viton Seal, Temp Limit: 177° C
Micron Ratings: 1, 5, 10, 20, 30
- C1 - Pleated Cellulose, Nylon End Caps, Tin Plated Louvered Canbody, Buna-N Seal, Temp Limit: 121° C
Micron Ratings: 5, 10, 20, 40
- C2 - Pleated Cellulose, Nylon End Caps, Corrosion Resistant Canbody, Buna-N Seal, Temp Limit: 121° C
Micron Ratings: 5, 10, 20, 40
- PCHE - Depth Polyester PEACH®, Nylon End Caps, Buna-N Seal, Temp Limit: 116° C
Micron Ratings: 5, 10, 20, 40, 70
- PCHL - Depth Polypropylene PEACH®, Polypropylene End Caps, EPDM Seal, Temp Limit: 82° C
Micron Ratings: 5, 10, 20, 40, 70

XPHP available on configuration codes E, L, G1, G2, GHT1, GHT2.



Viton® is a registered trademark of E. I. du Pont de Nemours and Company.

PECOFacet®, PEACH®, and Xtreampure® are trademarks of PECOFacet.

® indicates a PECOFacet trademark registered in the USA and various other countries.

PEACH® products are protected by patents in the USA as well as various other countries.

Refer to the website for the most current literature editions.

©2016 PECOFacet

PECOFacet has a policy of continuous product research and development and reserves the right to change design and specifications without notice.