

DRUM PUMPS

FOR EACH LIQUID
THE RIGHT DRUM PUMP



Advantages of grün-drum pumps

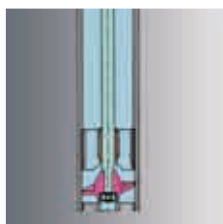


mechanical seal



sealless

- **no inner-tube**
- easily accessible shaft
- easy to clean
- solid shaft
- mechanical seal



singlestage design



multistage design

- **singlestage design**
- big discharge flows

- **multistage design**
- lower noise
- more stages possible, gives more pressure



feed-screw

- **with feed-screw**
- for medium-viscous liquids
- smooth pumping of liquids
- low noise with three-phase motor



quick release coupling



magnetic coupling

- **quick release coupling**
- speedy connection
- robust design
- rugged bow-gear coupling
- suitable for aggressive environments

- **magnetic coupling**
- hermetically sealed
- for gaseous and dangerous liquids
- no leakage



quick release coupling



rigid connection

- **Eccentric screw barrel pump with quick release coupling**
- removable drive motor
- easy and safe handling with the separate pump tube
- no lifting device necessary
- it's possible to drive several pump tubes with only one motor
- **rigid connection** of drive motor and pump tube

Traditional drum pumps

Drum pumps with mechanical seal



Applications	PP for aggressive liquids like acids, caustics, vegetable oils, paints ... PVDF highly aggressive liquids like concentrated or mixed acids, ... SS acids, caustics, fruit-juices, milk, paints, thin-bodied oils, ... HC highly aggressive liquids like concentrated or heated acids and solvents, ...
Pump tubes	tube: polypropylene (PP), polyvinylidene fluoride (PVDF), stainless steel (SS) or Hastelloy C4 (HC) seal: mechanical seal immersion depth: 700, 1000, 1200 mm and special immersion depth
Drive motors	electrical: p310 = 520 Watt, 230 Volt / 50 Hz, 115 Volt / 60 Hz p400 = 850 Watt, 230 Volt / 50 Hz, 115 Volt / 60 Hz pneumatical: d600 = 600 Watt at 6 bar compressed air
Performance	delivery rate max. 175 l/min delivery head max. 22 mWS viscosity max. 700 mPas

Modern multipurpose drum pumps

Sealless drum pumps



Applications	PP for aggressive liquids like acids, caustics, vegetable oils, paints ... PVDF highly aggressive liquids like concentrated or mixed acids, ... SS acids, caustics, fruit-juices, milk, paints, thin-bodied oils, ... HC highly aggressive liquids like concentrated or heated acids and solvents, ...
Pump tubes	tube: polypropylene (PP), polyvinylidene fluoride (PVDF), stainless steel (SS) or Hastelloy C4 (HC) seal: sealless immersion depth: 700, 1000, 1200 mm and special immersion depth
Drive motors	electrical: p310 = 520 Watt, 230 Volt / 50 Hz, 115 Volt / 60 Hz p400 = 850 Watt, 230 Volt / 50 Hz, 115 Volt / 60 Hz pneumatical: d600 = 600 Watt at 6 bar compressed air
Performance	delivery rate max. 150 l/min delivery head max. 21 mWS viscosity max. 800 mPas

For toxic liquids

Drum pumps with magnetic coupling ...



Applications	suitable for pumping toxic, gaseous and hazardous liquids due to being hermetically sealed with no leakage.
Pump tubes	tube: polypropylene (PP), polyvinylidene fluoride (PVDF), stainless steel (SS) or Hastelloy C4 (HC) immersion depth: 700, 1000, 1200 mm and special immersion depth
Drive motors	electrical: p310 = 520 Watt, 230 Volt / 50 Hz, 115 Volt / 60 Hz p400 = 850 Watt, 230 Volt / 50 Hz, 115 Volt / 60 Hz pneumatical: d600 = 600 Watt at 6 bar compressed air
Performance	delivery rate max. 175 l/min delivery head max. 22 mWS viscosity max. 50 mPas

For each problem the right solution.

For inflammable liquids

Explosion-proof drum pumps in stainless steel and HC



Applications	SS inflammable liquids according to VbF HC highly aggressive and inflammable liquids
Pump tubes	tube: stainless steel (SS) or Hastelloy C4 (HC) seal: mechanical seal or sealless immersion depth: 700, 1000, 1200 mm and special immersion depth
Drive motors	electrical: Ex700 = 700 Watt, 230 Volt / 50 Hz (ATEX) Ex700 = 700 Watt, 115 Volt / 60 Hz (ATEX) pneumatical: d600 = 600 Watt at 6 bar compressed air (ATEX)
Performance	delivery rate max. 150 l/min delivery head max. 17 mWS viscosity max. 800 mPas

For mixed liquids

Mixing drum pumps in PP and stainless steel



Applications	PP aggressive emulsions, dispersions and suspensions SS paints and lacquers and other mixed and inflammable liquids
Pump tubes	tube: polypropylene (PP) or stainless steel (SS) seal: sealless immersion depth: 700, 1000, 1200 mm and special immersion depth
Drive motors	electrical: p310 = 520 Watt, 230 Volt / 50 Hz, 115 Volt / 60 Hz p400 = 850 Watt, 230 Volt / 50 Hz, 115 Volt / 60 Hz explosion-proofed: Ex700 = 700 Watt, 230 Volt / 50 Hz, 115 Volt / 60 Hz (ATEX) pneumatical: d600 = 600 Watt at 6 bar compressed air
Performance	delivery rate max. 145 l/min delivery head max. 21 mWS viscosity max. 800 mPas

For complete drum emptying

Complete-drainage drum pump in PP and stainless steel



Applications	PP for aggressive liquids like acids, caustics, vegetable oils, paints, galvanic liquids, ... Niro acids, caustics, fruit-juices, milk, paints, thin-bodied oils, ...
Pump tubes	tube: polypropylene (PP) or stainless steel (SS) seal: mechanical seal immersion depth: 700, 1000, 1200 mm and special immersion depth
Drive motors	electrical: p310 = 520 Watt, 230 Volt / 50 Hz, 115 Volt / 60 Hz p400 = 850 Watt, 230 Volt / 50 Hz, 115 Volt / 60 Hz pneumatical: d600 = 600 Watt at 6 bar compressed air
Performance	delivery rate max. 80 l/min delivery head max. 16 mWS viscosity max. 700 mPas



GLP25 - for many applications

NEW - the innovative and mobile laboratory / industry pump

	Applications	general: non inflammable liquids, acids and basis low concentrated, fluids of medium viscosity (colours, emulsions, dispersions, suspensions, oils) extra liquids: inflammable liquids when ATEX is not required (special laboratory conditions) pumping heavy and viscous liquids only in small quantities, motor temperature is limited
	Motor	electric: max. 160 W, 230 Volt / 50 Hz
	delivery rate	0 - 30 l/min with discharge tube
	pump units	wetted materials: PP, Stainless Steel, FKM length of tube: 500, 700, 1000 mm
 Click-joint	 different container sizes	 discharge tube, nozzle

For medium-viscosity liquids

Feed-screw drum pumps in PP und stainless steel

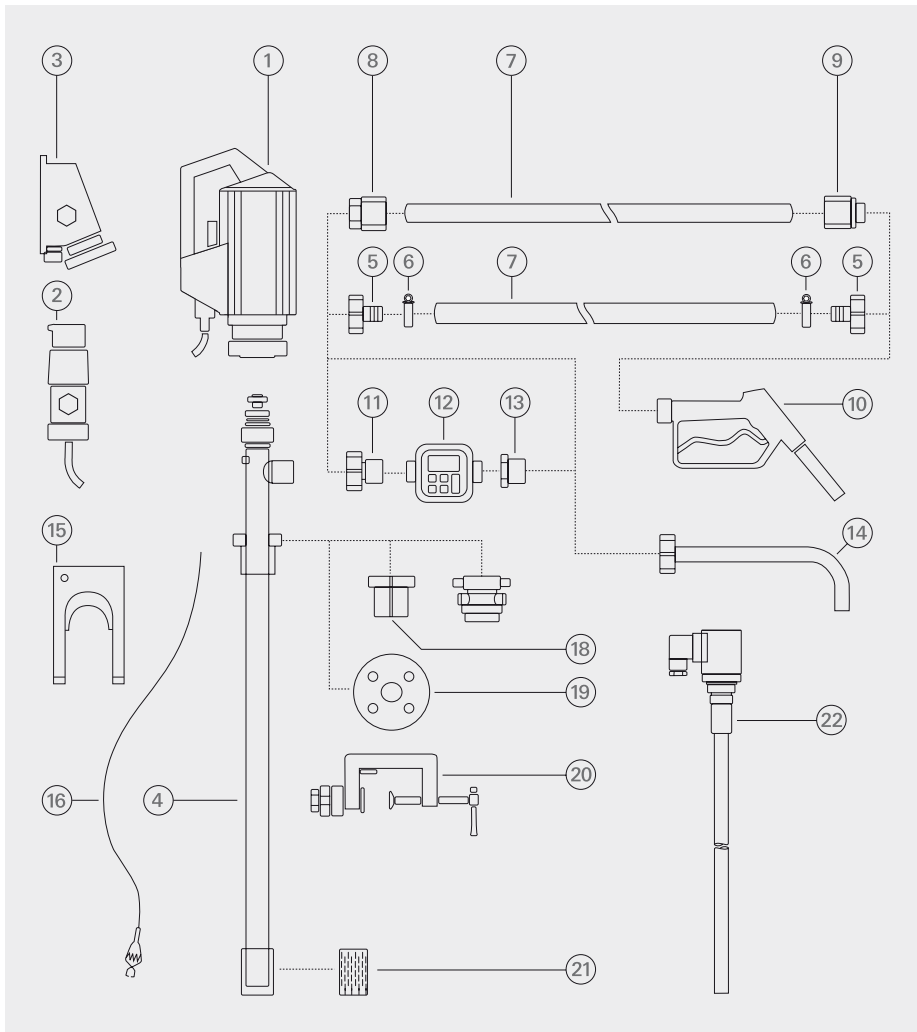
	Applications	PP aggressive medium-viscosity liquids and paints, vegetable oils, cosmetics, SS paints, lacquers, fruit-juices, oils, vegetable oils, cosmetics, foods,
	Pump tubes	tube: polypropylene (PP) or stainless steel (SS) seal: mechanical seal or sealless immersion depth: 700, 1000, 1200 mm and special immersion depth
	Drive motors	electrical: p400 = 850 Watt, 230 Volt / 50 Hz, 115 Volt / 60 Hz, (universal motor) pd500 = 0,37 kW, single 230 V / 50 Hz or three-phase 400 V / 50 Hz pneumatical: d600 = 600 Watt at 6 bar compressed air
	Performance	delivery rate max. 65 l/min delivery head max. 10 mWS viscosity max. 1500 mPas

For high-viscosity liquids

Eccentric screw drum pumps in stainless steel

	Applications	for pumping high-viscosity liquids like resin, paints, lacquers, glue, oil, soap, shampoo, ointment, honey, sirup, tomato paste, fruit concentrate, molasse, glucose, ...
	Pump tubes	tube: stainless steel (SS) stators: NBR, NBR-light, FPM, PTFE seal: mechanical seal or packing gland immersion depth: 1000 mm and special immersion depth
	Drive motors other on demand	rigid or quick release coupling electrical: 0,37 – 1,5 kW, 700 or 900 rpm, 400 Volt / 50 Hz pneumatical: 0,5 – 1,1 kW, up to 1000 rpm at 6 bar compressed air
	Performance	delivery rate max. 50 l/min delivery head max. 12 bar viscosity max. 100.000 mPas

Accessories



- 1 Drive motor
- 2 Explosion-proof plug
- 3 Explosion-proof socket
- 4 Pump tube
- 5 Hose connector
- 6 Hose clamps
- 7 Hose
- 8 Hose fittings
- 9 Hose fittings
- 10 Nozzle
- 11 Flow meter connection
- 12 Flow meter
- 13 Reducing piece
- 14 Discharge spout
- 15 Wall bracket
- 16 Equipotential bounding cable
- 17 Emission proof drum adapter
- 18 Drum adapter
- 19 Installation flange
- 20 Clamping device
- 21 Foot strainer
- 22 Level switch

grün-pumpen gmbh

Otto-Schott-Str. 19

D-97877 Wertheim

Phone (00 49) 93 42 / 93 51 6-0

Fax (00 49) 93 42 / 93 51 6-29

info@gruen-pumpen.de

www.gruen-pumpen.de

4.2009 aha-design.de



take out, what's in.